



### SPECIAL FEATURES

- STAINLESS STEEL CASE & MEASURING SYSTEM
- SOLID FRONT DESIGN FEATURES BAFFLE WALL INTERPOSED BETWEEN THE SENSING SYSTEM & THE WINDOW, AND PRESSURE RELIEVING BACK FOR INCREASED SAFETY.
- SOCKET & CASE WELDED
- DRY OR LIQUID FILLED
- STAINLESS STEEL BLOW OFF BACK
- STANDARD FOLLOWED IN GENERAL EN 837-1



### APPLICATIONS

ESPECIALLY SUITED FOR OCCASIONAL SHORT DURATION OVER PRESSURES OF UPTO 4 TIMES SCALE RANGE. (EXACT VALUES SEE TABLE)  
SUITABLE FOR CORROSIVE ENVIRONMENTS & GASEOUS OR LIQUID MEDIA THAT WILL NOT OBSTRUCT THE PRESSURE SYSTEM.

### SPECIFICATIONS

#### STANDARD VERSION : 100 mm & 150 mm

<b>Accuracy</b>	: ±1.0% FOR RANGE SCALE ONLY & : ±3.0% FOR END SCALE (END SCALE IS COVERED WITH TRIANGLE)
<b>Ambient temperature</b>	: - 20°C to + 65°C
<b>Process temperature</b>	: Max. 300°C
<b>Operating pressure range</b>	: 75% of Scale Value
<b>Over pressure limit</b>	: Refer Table
<b>Case &amp; Bezel</b>	: AISI 304 SS (Bayonet Type)
<b>Bourdon</b>	: AISI 316L SS
<b>Socket</b>	: AISI 316L SS
<b>Movement</b>	: AISI 304 SS
<b>Joints</b>	: Tig Argon Arc Welding
<b>Protection</b>	: IP 65
<b>Dial</b>	: Aluminum, black graduation on white background (The scale end is marked by a black triangle)
<b>Pointer</b>	: Aluminum, black Coloured Micrometer Zero Adjustable
<b>Window</b>	: Shatterproof / Safety Glass
<b>Blow off Disc</b>	: AISI 304 SS
<b>Gasket &amp; Filling Plug</b>	: Neoprene

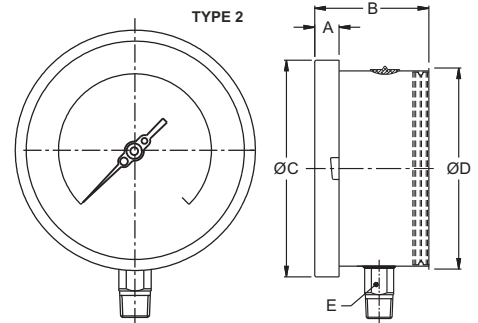
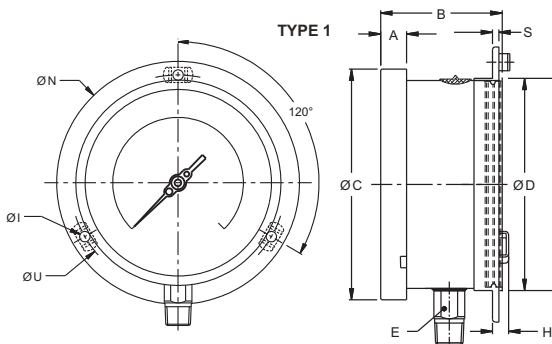
#### GLYCERINE FILLED VERSION (OPTION PY)

<b>Accuracy</b>	: ±1.0% FOR RANGE SCALE ONLY & : ±3.0% FOR END SCALE (END SCALE IS COVERED WITH TRIANGLE)
<b>Ambient Temperature</b>	: Maximum 65°C
<b>Dampening Liquids</b>	: Glycerine 99.7%
<b>Other Features</b>	: Refer Specification of Standard Version

#### Temperature effect:

The variation of indication caused by effects of temperature is to be calculated by below formula; which is to be added in the specified accuracy while measurement :-  
Formula :  $\pm 0.04 \times (t_2 - t_1) \% \text{ of F. S.}$   
where  $t_1$  = reference temperature (+20°C) and  $t_2$  = ambient temperature in °C.

**DIMENSIONS - STANDARD VERSION**



NS	A	B	ØC	ØD	E	ØN	ØU	H	ØI	S	Weight in gram (With Box)
100	12.5	70	111	100	22	134	118	15	6	1	870.0
150	15	70	161	149	22	186	168	15	6	1	1440.0

NS	A	B	ØC	ØD	E	Weight in gram (With Box)
100	12.5	70	111	100	22	770.0
150	15	70	161	149	22	1300.0

Notes : • Drawings are not to scale. • All Dimensions are in mm. • NS = Nominal Size

**RANGE TABLE**

Note : Waaree offers National / International Scales like kPa, Mpa, bar, psi, kg/cm<sup>2</sup> & Equivalent scales as per the requirement can be provided on request.

Following are the example tables for kg/cm<sup>2</sup> / bar with overload range.

**SCALE & OVERLOAD RANGES**

SINGLE SCALE (kg/cm <sup>2</sup> or bar)			
RANGE	OVERLOAD RANGE	RANGE	OVERLOAD RANGE
0/0.6	2.5	0/5	25
0/1	4	0/10	40
0/1.6	6	0/16	60
0/2.5	10	0/25	80
0/4	16	0/40	100

**HOW TO ORDER**

**BASIC MODEL**

**CODE**

**NOMINAL SIZE**

F H  
100 mm 150 mm

**TYPE OF MOUNTING**

- 1 WALL/ SURFACE / PROJECTION MOUNTING WITH BOTTOM ENTRY
- 2 DIRECT BOTTOM ENTRY

**GAUGE CONNECTION**

4BM 1/2" BSP (M) STANDARD 2NM 1/4" NPT (M) 4NM 1/2" NPT (M) STANDARD

**RANGE**

REFER RANGE TABLE

**OPTIONS**

- PW FIVE POINT CALIBRATION CERTIFICATE
- RH CUSTOM DESIGNED DIAL
- SW DIAL TAG MARKING
- SX SS TAG PLATE
- TB HELIUM LEAK TEST
- SF MOVEMENT WITH DAMPENING JELLY
- PY DAMPENING LIQUID GLYCERINE FILLED
- GH MATERIAL TEST CERTIFICATES\*

Example

AU

X

X

XXX

0/10  
kg/cm<sup>2</sup>

XX

\*MATERIAL TEST CERTIFICATES WILL BE PROVIDED FOR WETTED PARTS ONLY WITH CHEMICAL COMPOSITION TESTING. FOR OTHERS, PLEASE CONSULT FACTORY.

**Ordering Example: AU - X - X - XXX - 0/10 kg/cm<sup>2</sup> - XX**

FOR OTHER OPTIONAL ITEMS, PLEASE CONTACT FACTORY FOR DELIVERY AND MINIMUM QUANTITY OF ORDER.

Note : Specifications and dimensions given in this product catalogue represents the state of engineering at the time of printing. Modifications may take place and materials specified may be replaced by others without prior notice.